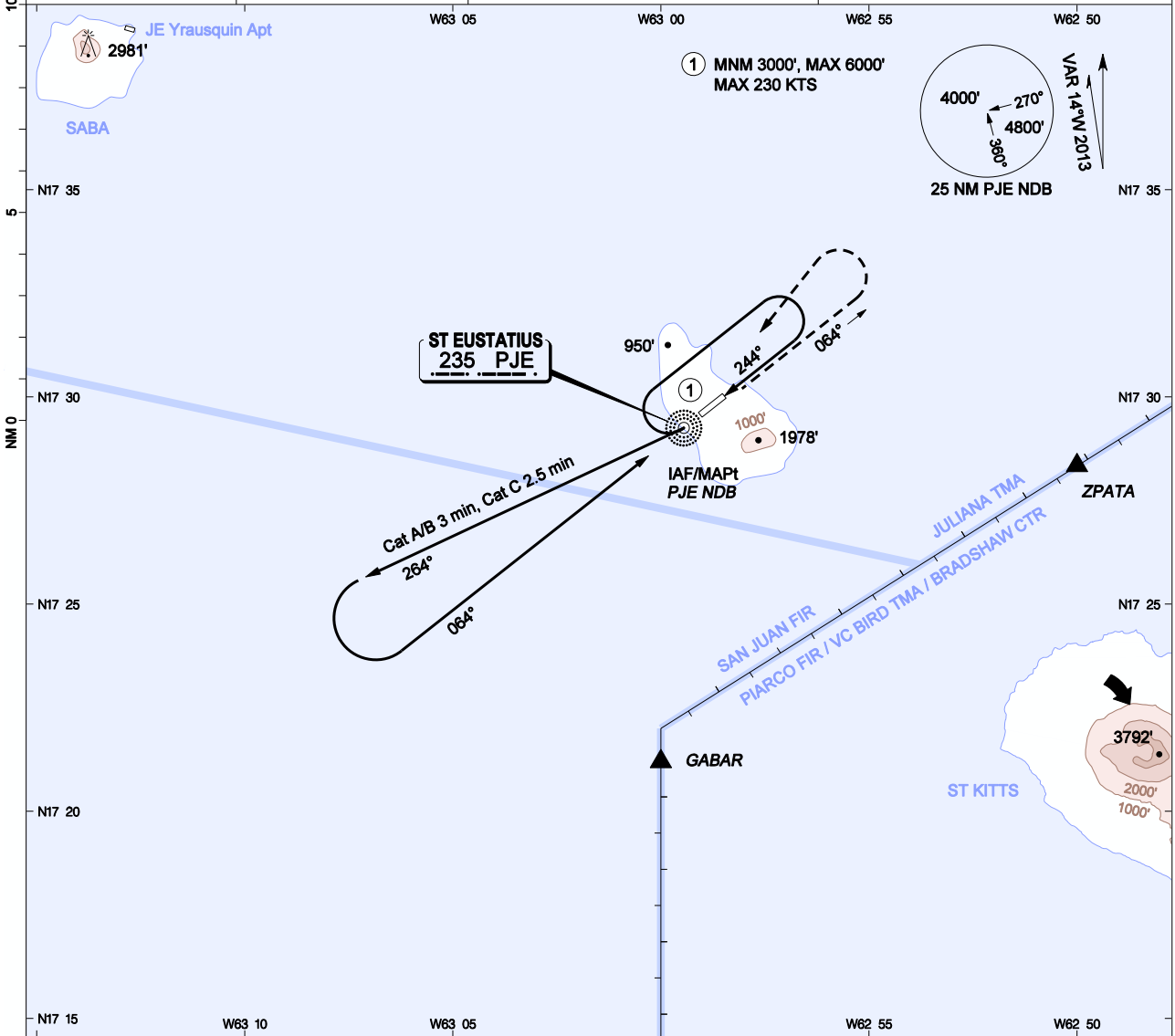


**INSTRUMENT  
APPROACH  
CHART- ICAO**

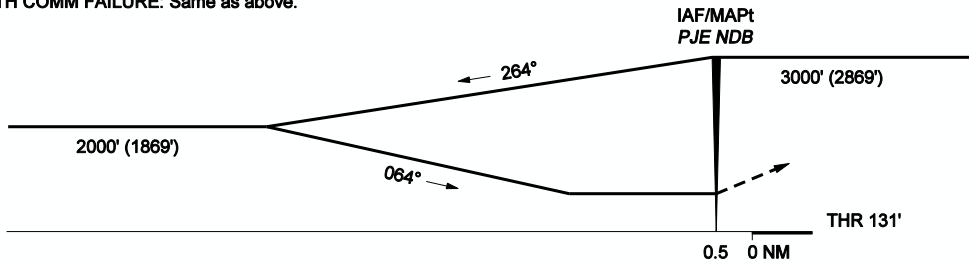
AD ELEVATION: 131'  
TRANS LEVEL: FL65  
TRANS ALT: 5000'

JULIANA APPR 128.95 (PRIMARY)  
JULIANA TWR 118.7 (SECONDARY)  
STATIA AFIS 118.10

**NDB RWY 06  
FD ROOSEVELT APT (TNCE)  
ST EUSTATIUS**



**MISSED APPROACH:** Climb on rwy track to 3000', then left turn direct PJE NDB and hold. Execute another approach or proceed direct PJM VOR for any TNCM approach.  
**MISSED APPR WITH COMM FAILURE:** Same as above.



OCA(H)	A	B	C						
STRAIGHT-IN	1700' (1569')	1720' (1589')	1740' (1609')						
CIRCLING north side only	1700' (1569')	1720' (1589')	1740' (1609')						

1. Bearings are magnetic, altitudes and elevation in feet, heights are relative to AD elevation, distance in NM.

CHANGES: TIKAL changed to ZPATA, ZPATA coordinates.